

ARCHITECTURE COMPETITION

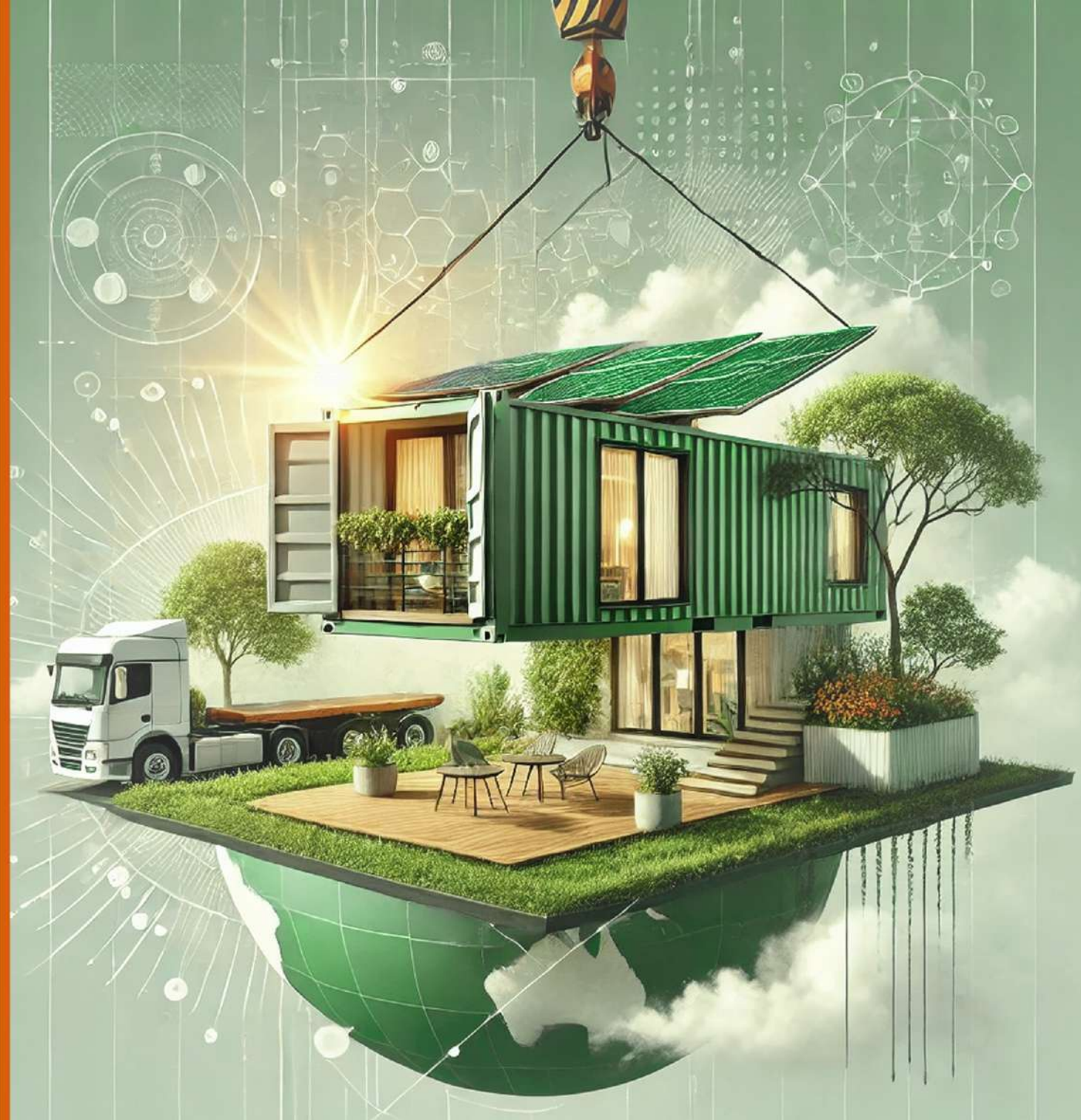
# THE ADAPTIVE GREEN HOME

Designing for  
New Family Realities

*September 19 - 21, 2025, in Rome at the Convention  
Center "La Nuvola," designed by M. Fuksas.*

EDITION 1 - 2025

edilsocialnetwork | Building  
**B-CAD** | Construction  
Architecture  
Design



# IGNITING ARCHITECTURAL INNOVATION

## Shaping a Green and Sustainable Future

**GREENLIVING LTD:** Since 2016, Green Living, led by CEO Arch. Vincenzo Russi, has pioneered sustainable architecture in Italy, specializing in homes built from recycled shipping containers. Our approach combines creative recycling, reduced environmental impact (up to 80% less concrete), and modular, flexible designs. We also deliver low-energy, eco-friendly homes with superior insulation and modern aesthetics, redefining green building innovation.

[www.greenlivingltd.com](http://www.greenlivingltd.com)



**B-CAD:** The Exclusive Hub for Innovation and Networking

Edilsocialnetwork B-CAD is more than just an exhibition—it's an exclusive platform connecting top professionals, where innovation comes to life through revolutionary products, cutting-edge trends, and high-level training content.

Participating in B-CAD means engaging directly with the industry's elite and accessing a unique experience to build strategic, long-term relationships.

[www.bcadexpo.it](http://www.bcadexpo.it)



+ INNOVATIVE VISION

+ SUSTAINABILITY FOCUS

+ COMMITMENT TO EXCELLENCE

+ NEW ERA OF COMPETITIONS



# INTRODUCTION

---

Architecture has always been a mirror of society, adapting to cultural, economic, and technological changes. In recent years, we have witnessed a radical transformation in the way we live, the structure of families, and people's priorities. This has led to a redefinition of architectural spaces, presenting challenges and opportunities for designing the home of the future.

The aim of this competition is to select the best architectural proposal for the design of a self-sufficient home adaptable to any part of the world. The proposal must ensure comfort across various climates, promote the reuse of materials (such as shipping containers), and align with the principles of the circular economy. This project seeks to foster innovation and sustainability within the field of "Green Building," interpreting the new needs of typical families, exploring their future evolution, and addressing the flexibility of living spaces.

The winning proposals will not only be considered for potential construction but will also receive monetary prizes and special mentions. This competition, open to participants of all experience levels and from anywhere in the world, celebrates creativity within the framework of green edilizia, promoting principles of sustainability, practicality, flexibility, recycling, and circular economy. The 2025 Edition #1 aims to redefine architectural design toward a more responsible and innovative future.



# SUSTAINABILITY AS A FUNDAMENTAL PILLAR

The architecture of the future cannot disregard environmental awareness. Adopting principles of the circular economy, using renewable energies, harvesting resources like rainwater, and integrating recycled materials are now essential requirements in design and construction. Additionally, minimizing the carbon footprint of buildings—from construction to operation—is a priority.







## DIVERSITY IN FAMILY STRUCTURES

Traditional families, composed of parents and children, are no longer the only model. Today, homes are also formed by single individuals, childless couples, groups of friends sharing spaces, multigenerational families, and families that include pets as integral members. This diversity requires flexible designs that can adapt to different lifestyles, offering personalized and functional spaces.

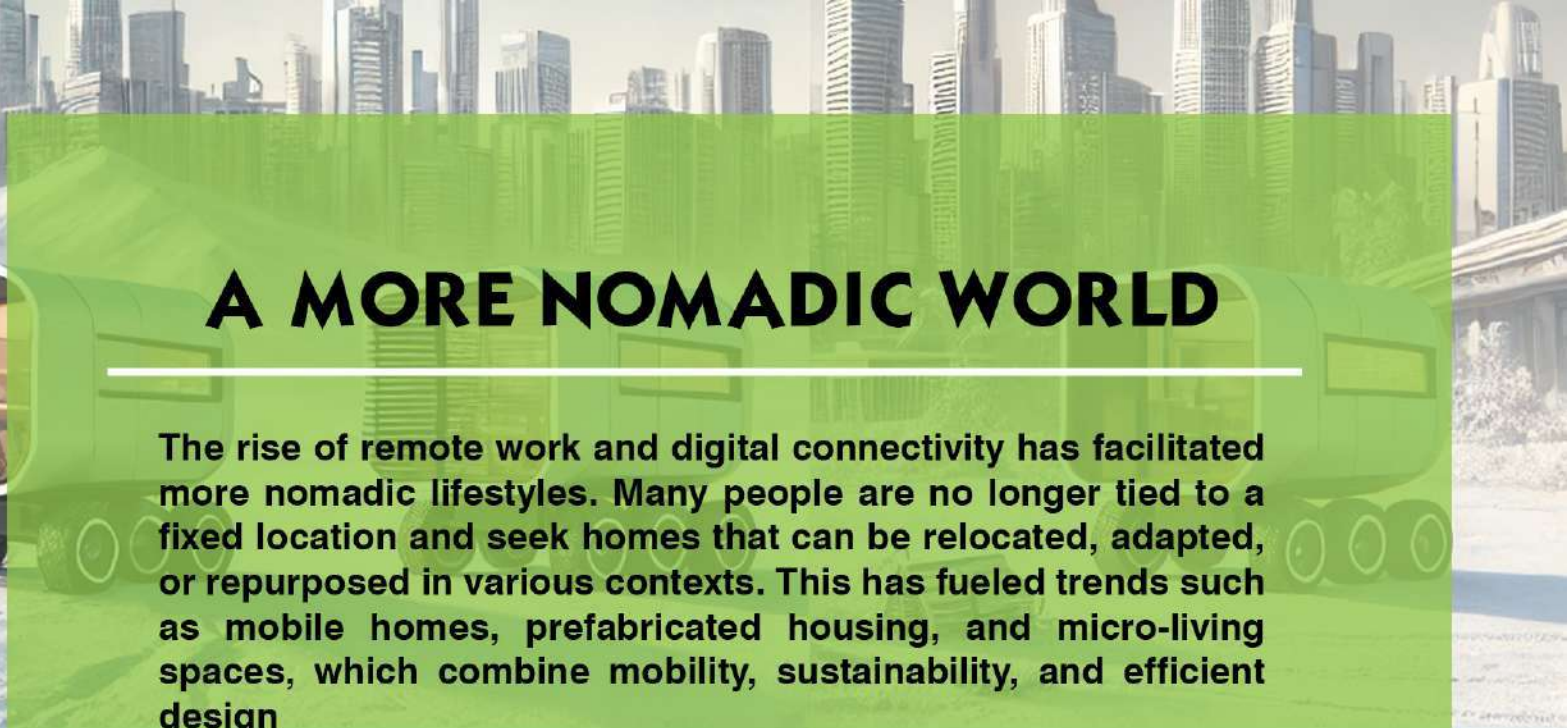


# THE HOME AS A MULTIFUNCTIONAL SPACE

The COVID-19 pandemic marked a turning point in how we perceive the home. Many people discovered that their homes also needed to function as offices, schools, gyms, and recreational spaces. This shift has driven the need to design versatile spaces, with areas that can be easily transformed based on changing needs. Modular solutions, multifunctional furniture, and smart use of space are now more relevant than ever.







## A MORE NOMADIC WORLD

The rise of remote work and digital connectivity has facilitated more nomadic lifestyles. Many people are no longer tied to a fixed location and seek homes that can be relocated, adapted, or repurposed in various contexts. This has fueled trends such as mobile homes, prefabricated housing, and micro-living spaces, which combine mobility, sustainability, and efficient design





# DESIGNING FOR WELL-BEING

Architecture should not only address functional needs but also promote the physical and emotional well-being of people. Natural light, cross ventilation, the use of non-toxic materials, and the creation of green spaces both inside and outside homes are key to ensuring a high quality of life. Furthermore, integrating smart technologies can optimize resource usage and enhance comfort.







SUSTAINABLE  
ENERGY

RENEWABLE  
ENERGY

SUSTAINABLE  
SRETEBS

ADAPTABLE  
ENERG

HUMAN  
TROPITABLE

DOVABLE  
ENERGY

## THE HOME OF THE FUTURE AN INTEGRATED VISION

The home of the future: an integrated vision

The home of the future will be an adaptable, sustainable space centered on human well-being. It will reflect the diversity of family structures and evolving lifestyles. In this context, architects face the challenge of innovating and creating solutions that not only meet today's demands but also anticipate the needs of tomorrow.

Architecture has the power to transform how we live and interact with the world around us. In a constantly changing world, we must build with awareness, creativity, and responsibility, ensuring that every space becomes a place where people can grow, adapt, and thrive.

HUMAN



# KEY DATES

CLOSING DATE FOR REGISTRATION  
**1 June 2025**



ANNOUNCEMENT OF THE WINNERS  
**20 September 2025**



BOOK PUBLICATION  
**31 November 2025**

the projects will be compiled into a project book and published. Each participant will receive a copy

CLOSING DATE FOR PROJECT SUBMISSION  
**01 September 2025**  
23:59 Roma Time



ADWARD CEREMONY  
**20 September 2025**  
at the Roma Convention Center  
"La Nuvola" Where the winning  
panels will be displayed



# PRIZES

## FIRST PLACE



Active collaboration in the design and project management for the **"Eagle"** residential complex by Green Living Architecture FZCO in Dubai. Companies will be included in the technical specifications for the supply of materials/products.

## SECOND PLACE

Free participation in the international B-CAD convention.

## 3RD TO 5TH PLACE

Award plaque for participation



# COMPETITION'S JURY



Organizational  
Management of B-CAD



Phd. Arch. Vincenzo Russi



Arch. Maria Ines Arabia



Arch. Maria Fernanda  
Dominguez



Buyer from the United  
Arab Emirates



Member of a training  
institute in the United  
Arab Emirates

And other renowned professionals who will be announced before the application deadline.

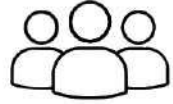
Jury members shall under no circumstances be contacted by competition participants or their representatives. Participants who attempt to contact jury members shall be disqualified.



# SUBMISSION REQUIREMENTS



Project Submission  
1x A0 sheet



Teams  
Up to 4 members

Participants are required to upload **a single A0 sheet in PDF format, not exceeding 30 MB**. The sheet should include sketches, renderings, plans, sections, elevations, diagrams, and/or other presentation tools necessary to clearly explain

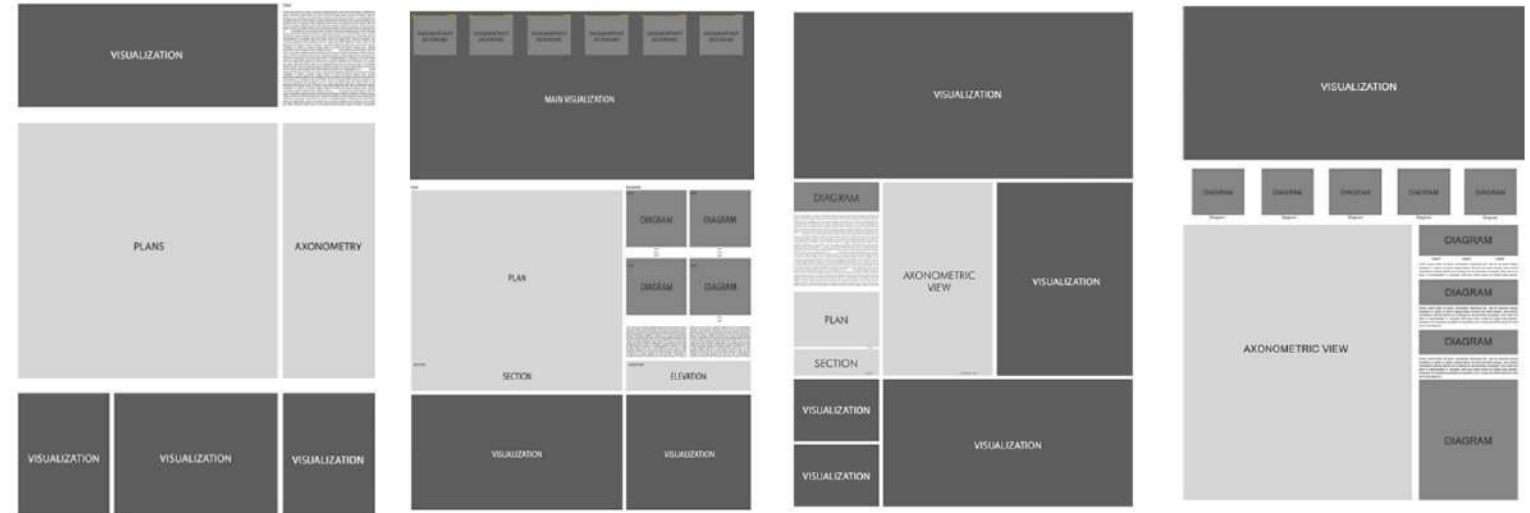
All information provided in writing must be in **English**.

File naming convention: Alphanumeric code – Competition name.

Participants must submit the required documentation exclusively via email to: [greenlivingltd1@gmail.com](mailto:greenlivingltd1@gmail.com)

The email must include the following subject line: **“The Adaptive Green Home: Designing for New Family Realities.”**

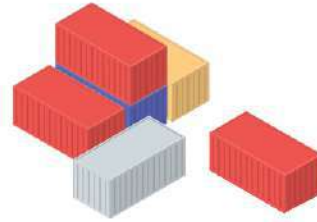
## Free panel layout





# PROPOSAL REQUIREMENTS

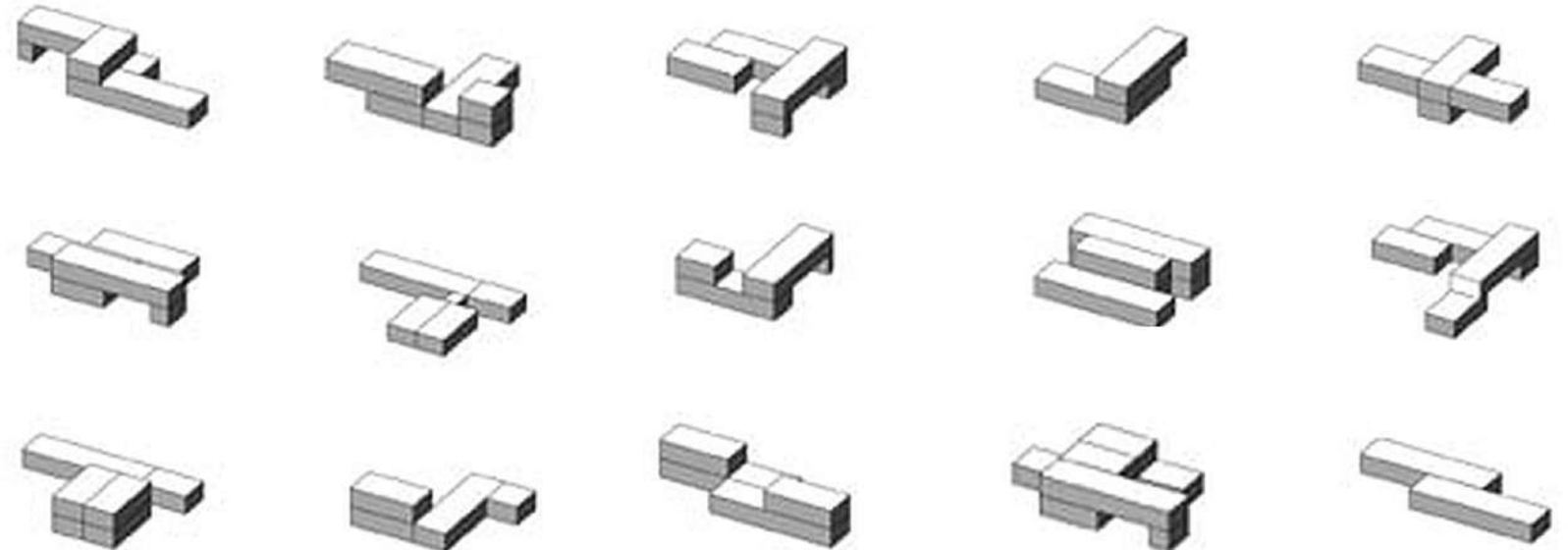
The proposal must include a **maximum of six 'high cube' shipping containers** or their equivalent using standard containers or a combination of one or more 20" and 40" containers.



- Design a self-sufficient dwelling adaptable to different climates and contexts, using shipping containers (high cube, standard, or combined). their proposal.
- Promote sustainability through circular economy principles, recycled materials, renewable energy, and a reduced environmental footprint.
- Create flexible and multifunctional spaces that accommodate diverse family structures and modern lifestyles.
- Integrate modular solutions, multifunctional furnishings, and smart technologies to optimize comfort and resource efficiency.
- Present an innovative project that combines design efficiency, aesthetics, and human well-being on a site proposed by the participant.
- The possibilities for solutions are personal

Key aspects required for the proposal and evaluation criteria:

- 3 points Architecture and construction (recycling)
- 2 points Energy efficiency
- 2 points Renewable sources (energy, water self-sufficiency, etc.)
- 1 point Interior comfort
- 2 points Technological innovation





# PRESENTATION DELIVERABLES SET

## Design submission material

1 sheet – A0 format (841mm x 1189 mm) – PDF format (max size 30 mb), portrait orientation.

The sheet must contain:

- the alphanumeric code (TeamID) placed in the top right corner.
- a plan illustrating the design proposal.
- a sectional drawing of the design proposal.
- a photorealistic rendering showcasing the design.
- a text explaining the design concept, with no specific length requirement.
- detailed drawings highlighting the envelope and key materials.
- axonometric diagrams providing insights into building systems or illustrating key architectural concepts.
- perspective views focusing on primary interior spaces.
- any additional elements or compositions at the participant's discretion.



Please note that the Presentation Deliverables Set outlined above is merely a recommendation. Participants may choose to utilize the full list, select specific elements from it, or propose an entirely different set that best communicates their design in the most effective way.

As this is an open-ended ideas competition, we encourage participants to submit plans, sections, and details that clearly convey dimensions, precise wall thicknesses, and material specifications for the structure and walls, ensuring a better understanding of the design's feasibility and constructability. participant's discretion.



# IDEAS FOR PANEL LAYOUT DESIGN

